

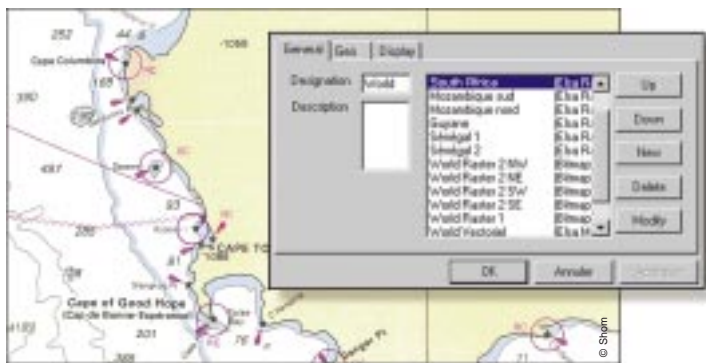
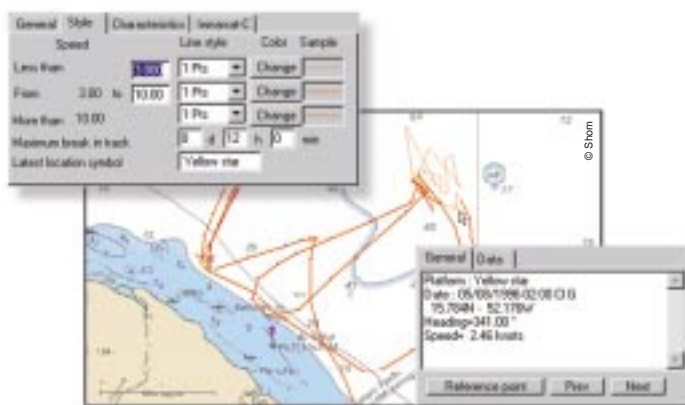
Elsa: office mapping software for displaying fishing vessel positions

Elsa is the perfect solution for fishing vessel monitoring:

- Display the latest fishing vessel locations immediately, simply by clicking a button.
- Build up an open database for your management applications (e.g., estimating fishing effort).
- ELSA helps shipowners to keep track of their fleets. Calculate distance covered and distance from port, and display fishing catch reports sent from a Psion handheld keypad.

Customize how your vessels look on screen:

choose symbols and line colors to show different speeds and detect speed variations at a glance. Click on a specific location of your track to see the speed and heading.



Choose among various maps

vector (showing coastlines) or raster maps (similar to marine navigation charts) to suit your needs, and display several maps simultaneously. We can also provide customized maps generated from your own source documents.

Check how long your vessels have been fishing in a specific zone.



Choose the automatic update, to receive all new locations instantly.



Getting positions to you quickly and efficiently ▶

Giving you the full picture ▶

Helping you manage your vessel positions ▶

- **Accessing** your vessel positions has never been easier. All you need is Internet or other connection to CLS Argos server. Elsa does the rest, displaying all your vessel locations and catch reports.
- **Elsa** processes and displays your ArgoNet positions whichever way you receive them online from an Argos server, via CLS Automatic Distribution Service (ADS), on floppy disk, or on CD-ROM.
- **Elsa** tells you where your vessel was last located. It continuously polls incoming locations and automatically refreshes your map display as they arrive.
- **Pinpoint** your vessels on screen anywhere in the world: Elsa displays the latest vessel locations on your map background or plots a track of successive locations.
- **Get a close-up view** of your vessel: zoom in on a specific point to display the name, date, location, heading and speed of your vessel, as well as catch reports, all at a click of your mouse.
- **Get the most out** of your ArgoNet positions: Elsa offers a range of tools to help you define your own formats for displaying coordinates and dates, calculating the distance between two points, and displaying parallels, meridians and scalebars.
- **Customize** how your vessels look on screen: choose symbols and line colors to show different speeds and detect speed variations at a glance.
- **Choose vector maps** (showing coastlines) or raster maps (marine navigation charts) to suit your needs, and display several maps simultaneously. We can also provide customized maps generated from your own digital charts.
- **Define** position search zones on your map for quicker and easier management of positions within a particular region of interest.
- **Retain** the full power and functionality of Windows: display locations and catch reports as text or on maps; copy and paste; print or save to a file.

Find out more about ELSA from our web sites:

www.cls.fr

www.nacls.com

